

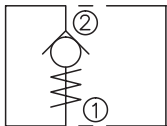
LCVR-10-P

Check Valve

DESCRIPTION

A cartridge-style poppet-type check valve

SYMBOL



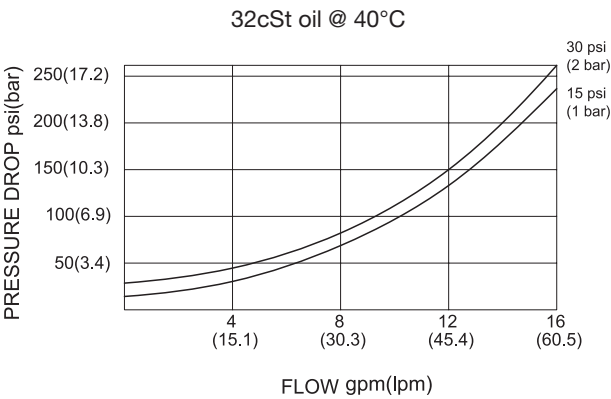
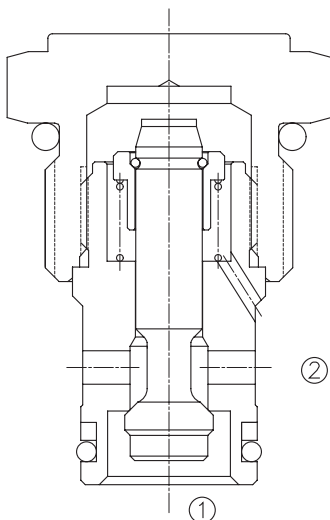
OPERATION

When pressure at ② rises above the spring bias pressure, the poppet is pushed from its seat and flow allowed from ② to ① .
The valve is closed (checked) from ① to ②.

SPECIFICATIONS

Operating Pressure	350bar
Flow	See PRESSURE DROP VS.FLOW graph.
Internal Leakage	2 drops/min max. at 350bar
Cracking Pressure	0.3=0.3bar 1=1bar 2=2bar 3=3bar
Temperature	-40°F to +250°F(-40°C to +120°C)
Filtration	See page N-1
Fluids	Mineral-based fluids with viscosities of 7.4 to 420 cSt.
Cavity	10-2,See page M-2
Housing Material	Steel & Ductile iron rated to 350bar

PRESSURE DROP VS.FLOW



TO ORDER

LCVR – 10 – P – * * – * *

┌───┐
1

┌──┐
2

┌──┐
3

┌──┐
4

┌──┐
5

1 Function
LCVR=Check Valve

2 Size
10=10 Size

3 Type
P=Poppet

4 Cracking Pressure
0.3=0.3bar
1=1bar
2=2bar
3=3bar

5 Port Size
Omit=None
6T=SAE6
8T=SAE8
3G=G 3/8
4G=G 1/2

※ See page K-4 for detail of housing
※ Other port sizes are available

D

INSTALLATION DIMENSIONS

Unit=Millimeters

